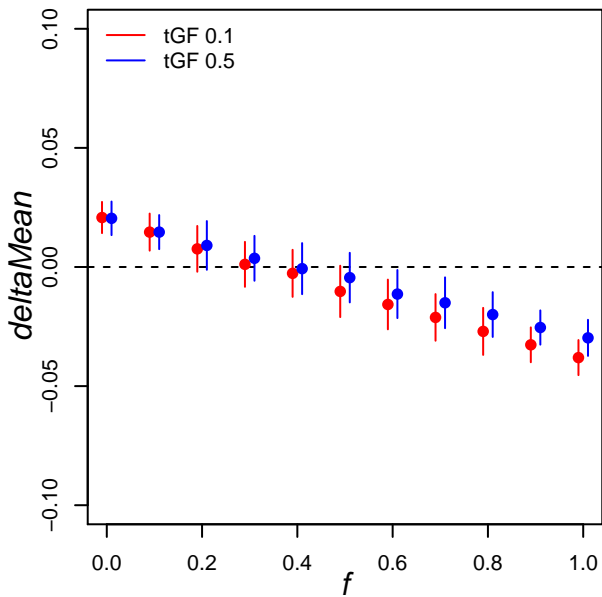
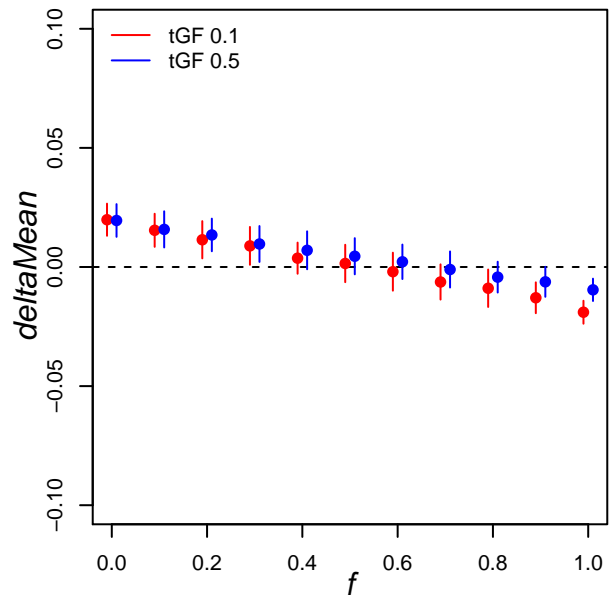


P₃ to P₂

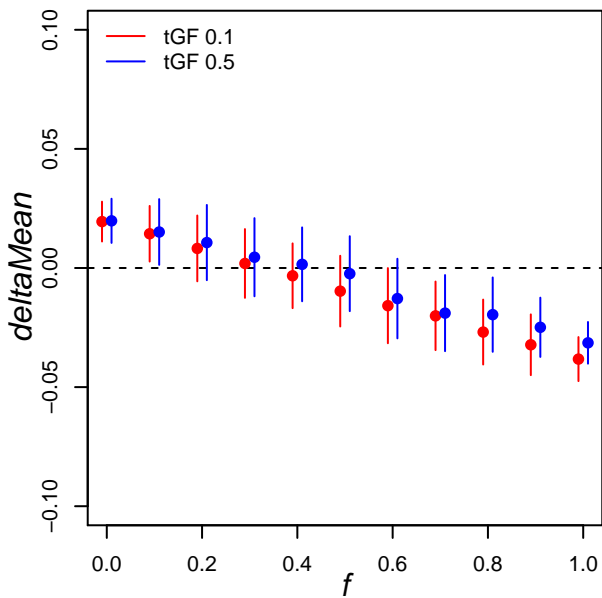
4N0mu = 0.01; 4N0r = 0.1; len = 1k

P₂ to P₃

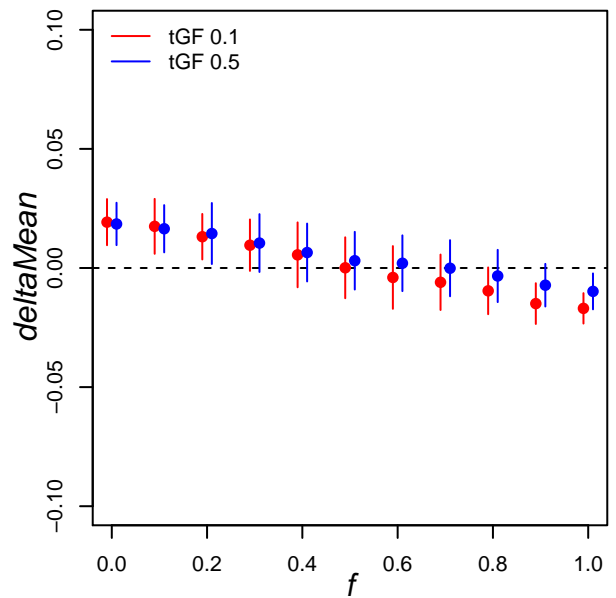
4N0mu = 0.01; 4N0r = 0.1; len = 1k

P₃ to P₂

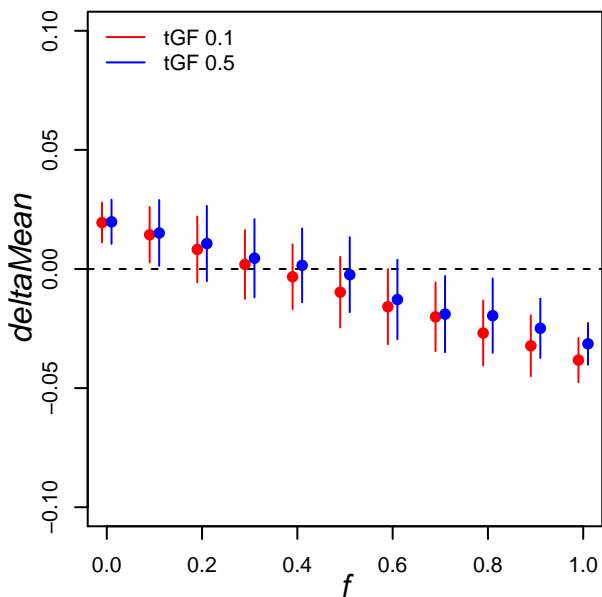
4N0mu = 0.01; 4N0r = 0.01; len = 1k

P₂ to P₃

4N0mu = 0.01; 4N0r = 0.01; len = 1k

P₃ to P₂

4N0mu = 0.01; 4N0r = 0.001; len = 1k

P₂ to P₃

4N0mu = 0.01; 4N0r = 0.001; len = 1k

