

Columns C 10, C 16, C 26

The C-series columns are designed for Standard Chromatography. The eluent inlet pieces incorporate a “reverse funnel” design that distributes eluent evenly over the cross-sectional area of the gel bed surface. This causes minimal disturbance of the gel bed and results in improved flow properties. The C-series columns are available in the following dimensions.

Column length	i.d. (mm)		
	10	16	26
10 cm	C 10/10	–	–
20 cm	C 10/20	C 16/20	–
40 cm	C 10/40	C 16/40	C 26/40
70 cm	–	C 16/70	C 26/70
100 cm	–	C 16/100	C 26/100

The following accessories are available for all C-series columns.

Column packing reservoirs RC 10, RC 16, RC 26. Unique design allows faster and more uniform packing by gravity or pump.

Adaptors AC 10, C 16, AC 26. Allow variations in gel bed height. The sample can be applied without disturbing the gel bed.

Thermostat jackets Jc 10, JC 16, JC 26. For accurate temperature control of the column (not available for C 10/10).

Unpacking

Please check the delivery against this list: 1 column, 2 m polyethylene tubing, 1 support screen, 1 net ring and 1 flow stopper pin.

Description

The column consists of three main parts; the glass tube, the top end piece, and the bottom end piece. Please note the difference between the inlet and the outlet sections of the end pieces.

Under normal operating conditions the only materials in contact with the effluent are polypropylene, polyamide, fluoro rubber and polyethylene. This ensures good chemical resistance. The materials of the different parts are given in the spare parts list.

Resistance

The columns can be used in aqueous solutions and nearly all organic solvents commonly used in chromatography with the following exceptions: chlorinated hydrocarbons, acetone and other ketones, aliphatic esters and phenol. Solutions containing more than 10% sodium hydroxide, 10% hydrochloride acid or 5% acetic acid should not be used since these may damage the polyamide net. The columns may be used from 0-60 °C and at pressures up to 0.1 Mpa (1 Bar or 14 psi).



Cleaning

Suitable cleaning agents are soapy water or laboratory detergents. Enzyme detergents are recommended for removing proteinaceous contamination. With the polyethylene tubing and the net ring (10) removed, the column may be autoclaved for 20 minutes at 120 °C.

Instructions

Numbers refer to the exploded diagram (Fig. 3).

Connection of tubing to nipples (Fig. 1)

1. Cut the tubing cleanly at a 45 angle.
2. Remove the connector nut (1) and slip it over the tubing.
3. Remove the sealing plug (2) (with the help of the metal stopper).
4. Push the tubing through the sealing plug until it projects about 1 cm.
5. Seat the tubing in the nipple. Slide the cone along the tubing, into the nipple.
6. Finger tighten the connector nut.

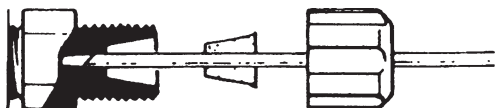


Fig 1.

Dismantling the column

1. Remove the top end piece (5) by holding it still and unscrewing the end piece ring (9).
2. Slide off the friction ring (7).
3. Slide off the guide ring (8) and the end piece ring.
4. Repeat the procedure for the other end of the column.

Reassembling the column

1. Make sure that the friction ring (7) and glass tube (13) are clean and dry. We recommend that these parts be washed with laboratory detergent and dried by rinsing in ethanol.
2. Slide the end piece ring (9) and the guide ring (8) on to the glass tube as indicated in the exploded diagram.
3. Slide the friction ring on the column with the conical side facing the centre of the tube.
4. Check the position of the friction ring by pressing the bottom end piece (12) with its sealing ring (6) to the end of the glass tube. There should be a gap of approx. 1 mm between the end piece and friction ring.
5. Assemble the end piece by keeping the bottom end piece still and turning the end piece ring. Finger tighten firmly.
6. Repeat the procedure for the top end piece.

Note: If you see a column at higher pressures, e.g. packing with Q and S Sepharose™ Fast Flow or Sephacryl™ HR, equip the column with a thermostat jacket (JC10, JC16 or JC26) to secure the ends.

Replacing the net ring and the support screen

1. Remove the net ring (19) by inserting a sharp tool between the ring and the end piece.
2. Lay a support screen (11) on the end piece.
3. Snap on a new net ring.

Packing the column

Instructions for packing the column with Sephadex™, Sepharose and Sephacryl High Resolution are given in the GE Healthcare handbook "Gel Filtration – Principles and Methods". Instructions for packing Sephadex Ion Exchanger are given in the GE Healthcare handbook "Ion Exchange Chromatography – Principles and Methods". Column packing advice is also available on the Column Packing Video.

Faster and improved packing can be obtained by using the column packing reservoir mentioned above.

Sample application

Three standard methods for sample application are described in the booklet "Gel filtration – theory and practice."

The C-series columns are specially designed for sample application under the eluent.

1. The "reversed funnel" design of the inlet piece gives minimum disturbance to the sample when elution of the column is started.
2. The standard tubing can be slipped through the hole in the top end piece when the tubing connector is dismantled. The sample can be applied without dismantling the top end piece.

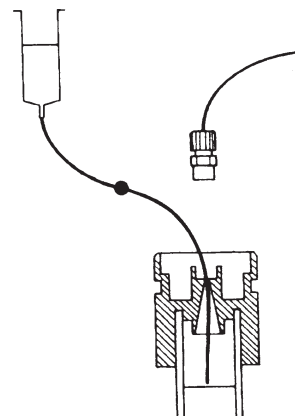


Fig 2.

Note: The method demands a sample more dense than the buffer. The best way to apply the sample is either with gravitational feed from an open syringe (Fig. 2) or by sucking the sample into a piece of tubing using a peristaltic pump, then reversing the flow and very slowly applying the sample.

Ordering information

Column*	Code No.	Thermostat Jacket	Code No.	Adaptor**	Code No.	Packing Reservoir	Code No.
C 10/10	19-5001-01	Not available	Not available				
C 10/20	19-5002-01	JC 10/20	19-5004-01	AC 10	19-5006-01	RC 10	19-5007-01
C 10/40	19-5003-01	JC 10/40	19-5005-01				
C 16/20	19-5101-01	JC 16/20	19-5105-01				
C 16/40	19-5102-01	JC 16/40	19-5106-01				
C 16/70	19-5103-01	JC 16/70	19-5107-01	AC 16	19-5109-01	RC 16	19-5110-01
C 16/100	19-5104-01	JC 16/100	19-5108-01				
C 26/40	19-5310-01	JC 26/40	19-5204-01				
C 26/70	19-5202-01	JC 26/70	19-5205-01	AC 26	19-5207-01	RC 26	19-5208-01
C 26/100	19-5203-01	JC 26/100	19-5206-01				

* All columns are delivered with 2 m polyethylene tubing (i.d. 1.0 mm), 1 bed support screen and 1 snap-on bed support net.

** All adaptors are delivered with 1 m polyethylene tubing (i.d. 1.0 mm), 1 bed support screen, 1 snap-on bed support net and 1 xpander O-ring.

Spare parts

The exploded diagram overpage shows the position of the different parts of the columns. For replacement please order according to the list below using the appropriate

code number. Please note that the code numbers for all three column widths are included in the same table.

Code No. Item No.	Designation	C 10	C 16	C 26	Material	No. Per pack
1	Connector nut	19-0038-01	19-0038-01	19-0038-01	A	1
2	Sealing plug	19-0039-01	19-0039-01	19-0039-01	B	5
3	Tubing nipple	–	19-0035-01	19-0035-01	C*	2
4	O-ring	–	19-0680-01	19-0680-01	B	10
5	Top end piece	19-5023-01	19-5123-01	19-5223-01	C	1
6	Sealing ring	19-5027-01	19-5127-01	19-5235-01	D	5
7	Friction ring	19-5020-01	19-5120-01	19-5220-01	D	5
8	Guide ring	19-5021-01	19-5121-01	19-5221-01	A	5
9	End piece ring	19-5025-01	19-5125-01	19-5225-01	C	1
10	Net ring 10 µm	19-5008-01	18-8761-01	18-7060-01	E	5
11	Support screen	19-1767-01	19-0651-01	19-0656-01	F**	5
12	Bottom end piece	19-5024-01	19-5124-01	19-5224-01	C	1
13	Glass tube for column length					
	10 cm	19-5035-01	–	–	G	1
	20 cm	19-5036-01	19-5137-01	–	G	1
	40 cm	19-5037-01	19-5138-01	19-5236-01	G	1
	70 cm	–	19-5139-01	19-5237-01	G	1
	100 cm	–	19-5140-01	19-5238-01	G	1
14	Tubing i.d. 1 mm	19-0040-01	19-0040-01	19-0040-01	H	10 m
15	Stopper	19-0752-01	19-0752-01	19-0752-01	I	10
16	Tubing i.d. 0.5 mm	19-5050-01	–	–	H	2
17	Net ring 80 µm	19-5009-01	–	–	E	4

* Material of main component

** The support screens for the C 10 columns are made from Teflon™

Material

A	Superpolyoxymethylene	F	Polypropylene
B	Fluoro rubber	G	Glass
C	Polypropylene (glass fibre reinforced)	H	Polyethylene
D	Silicone rubber	I	Stainless steel
E	Polyamide and polypropylene		

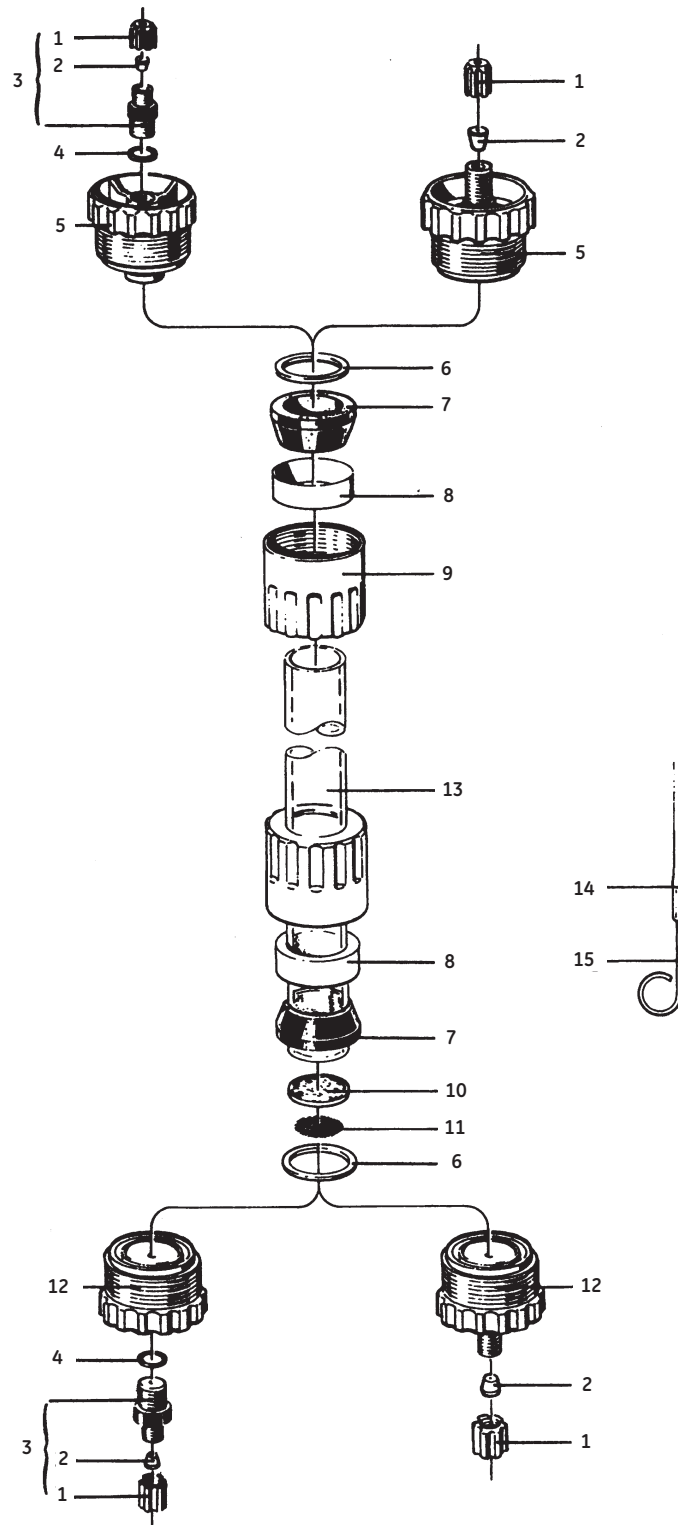


Fig 3.

www.gehealthcare.com

GE Healthcare Bio-Sciences AB

Björkgatan 30

751 84 Uppsala

Sweden

Superdex, Sephacryl and Sephadex are trademarks of GE Healthcare companies. GE, imagination at work and GE monogram are trademarks of General Electric Company.

All goods and services are sold subject to the terms and conditions of sale of the company within GE Healthcare which supplies them. GE Healthcare reserves the right, subject to any regulatory and contractual approval, if required, to make changes in specifications and features shown herein, or discontinue the product described at any time without notice or obligation. Contact your local GE Healthcare representative for the most current information.

© 2006 General Electric Company – All rights reserved.

GE Healthcare Bio-Sciences AB, a General Electric Company.

GE Healthcare Bio-Sciences AB
Björkgatan 30
SE-751 84 Uppsala
Sweden

GE Healthcare Europe GmbH
Munzinger Strasse 5
D-79111 Freiburg
Germany

GE Healthcare UK Ltd
Amersham Place
Little Chalfont
Buckinghamshire, HP7 9NA
UK

GE Healthcare Bio-Sciences Corp
800 Centennial Avenue
P.O. Box 1327
Piscataway, NJ 08855-1327
USA

GE Healthcare Bio-Sciences KK
Sanken Bldg. 3-25-1, Hyakunincho
Shinjuku-ku, Tokyo 169-0073
Japan

Asia Pacific Tel: +852 2811 8693 Fax: +852 2811 5251 • Australasia Tel: +61 2 9899 0999 Fax: +61 2 9899 7511 • Austria Tel: 01/57606-1619 Fax: 01/57606-1627 • Belgium Tel: 0800 73 888 Fax: 03 272 1637 • Canada Tel: 800 463 5800 Fax: 800 567 1008 • Central, East, & South East Europe Tel: +43 1 982 3826 Fax: +43 1 985 8327 • Denmark Tel: 45 16 2400 Fax: 45 16 2424 • Finland & Baltics Tel: +358-(0)9-512 39 40 Fax: +358 (0)9 512 39 439 • France Tel: 01 69 35 67 00 Fax: 01 69 41 96 77 • Germany Tel: 0761/4903-490 Fax: 0761/4903-405 • Italy Tel: 02 27322 1 Fax: 02 27302 212 • Japan Tel: +81 3 5331 9336 Fax: +81 3 5331 9370 • Latin America Tel: +55 11 3933 7300 Fax: +55 11 3933 7304 • Middle East & Africa Tel: +30 210 9600 687 Fax: +30 210 9600 693 • Netherlands Tel: 0165 580 410 Fax: 0165 580 401 • Norway Tel: 815 65 555 Fax: 815 65 666 • Portugal Tel: 21 417 7035 Fax: 21 417 3184 • Russia & other C.I.S. & N.I.S Tel: +7 (095) 232 0250, 956 1137 Fax: +7 (095) 230 6377 • South East Asia Tel: 60 3 8024 2080 Fax: 60 3 8024 2090 • Spain Tel: 93 594 49 50 Fax: 93 594 49 55 • Sweden Tel: 018 612 1900 Fax: 018 612 1910 • Switzerland Tel: 0848 8028 12 Fax: 0848 8028 13 • UK Tel: 0800 616928 Fax: 0800 616927 • USA Tel: 800 526 3593 Fax: 877 295 8102



imagination at work